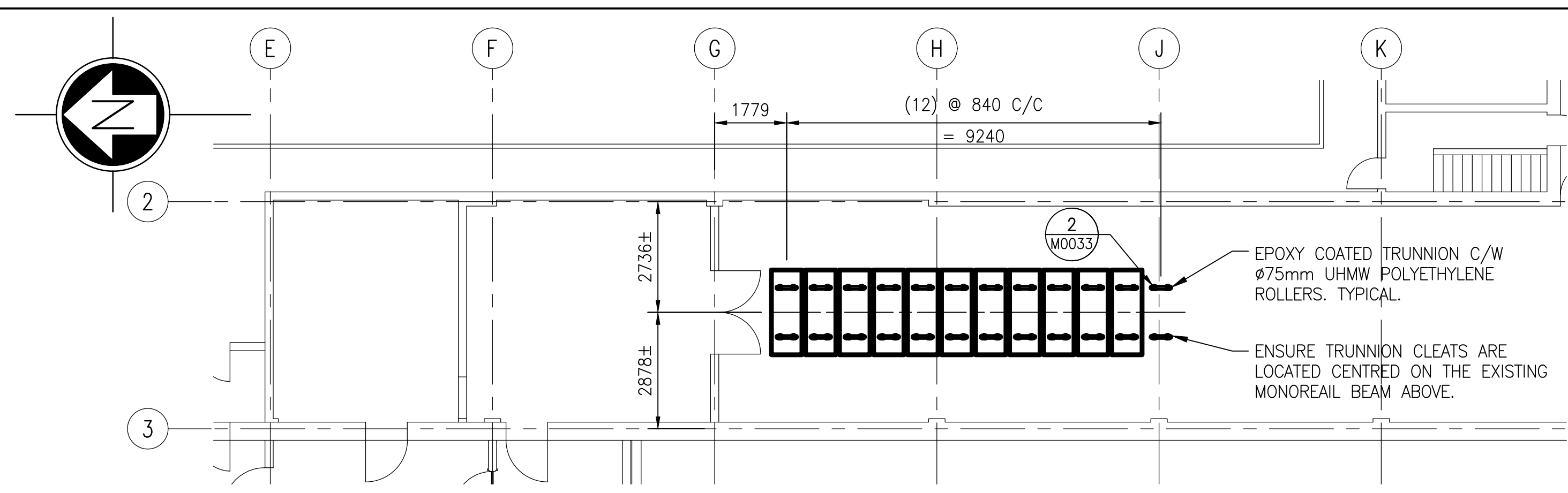
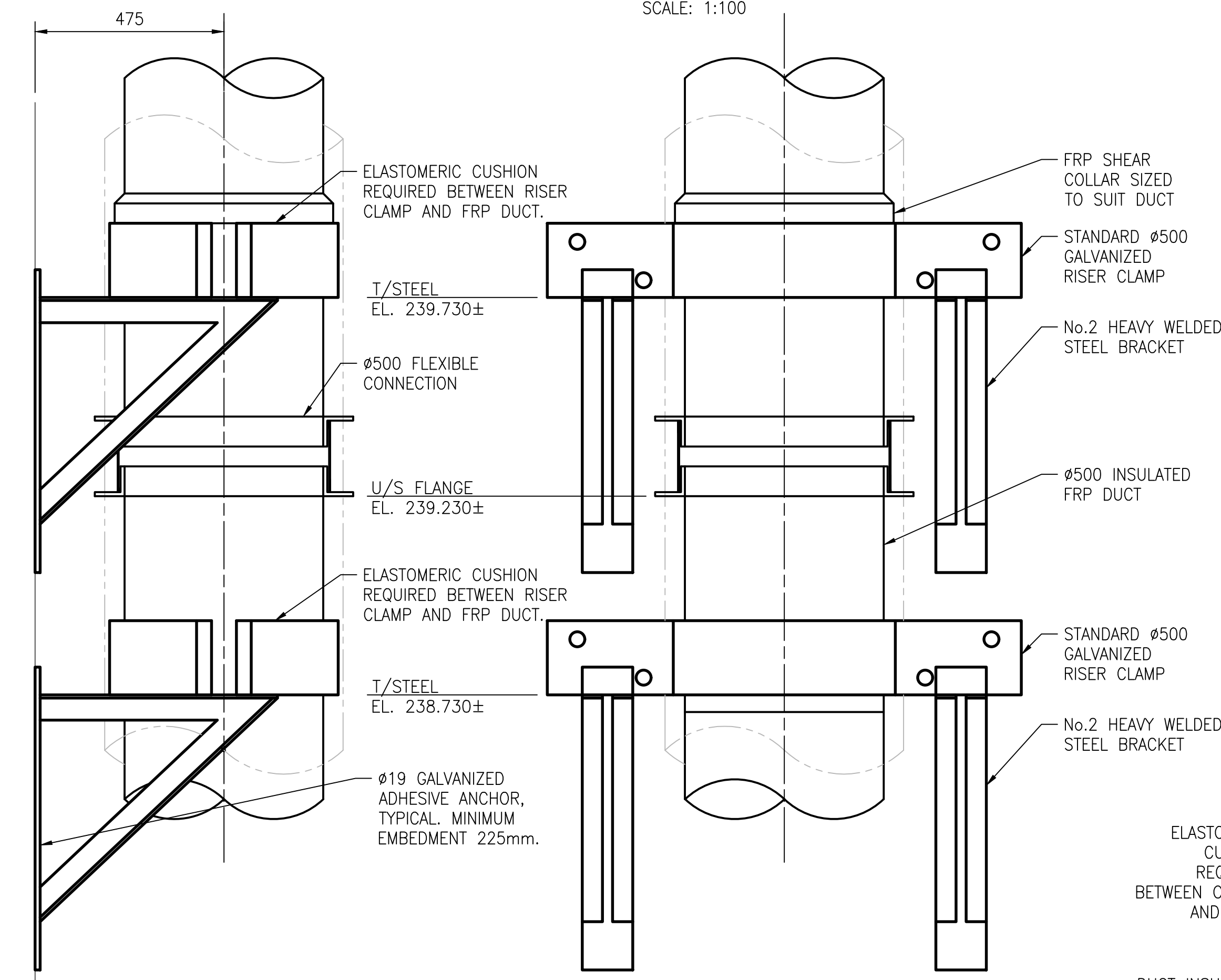


LAST SAVE: 2025/04/23 - 10:50am
PATH: \\WINPDC1.slbz\PROJ\694715\4ENG\45MEC\DD - General DWG\MacCLEAN\1-0630M-M00XX-001-PD.dwg

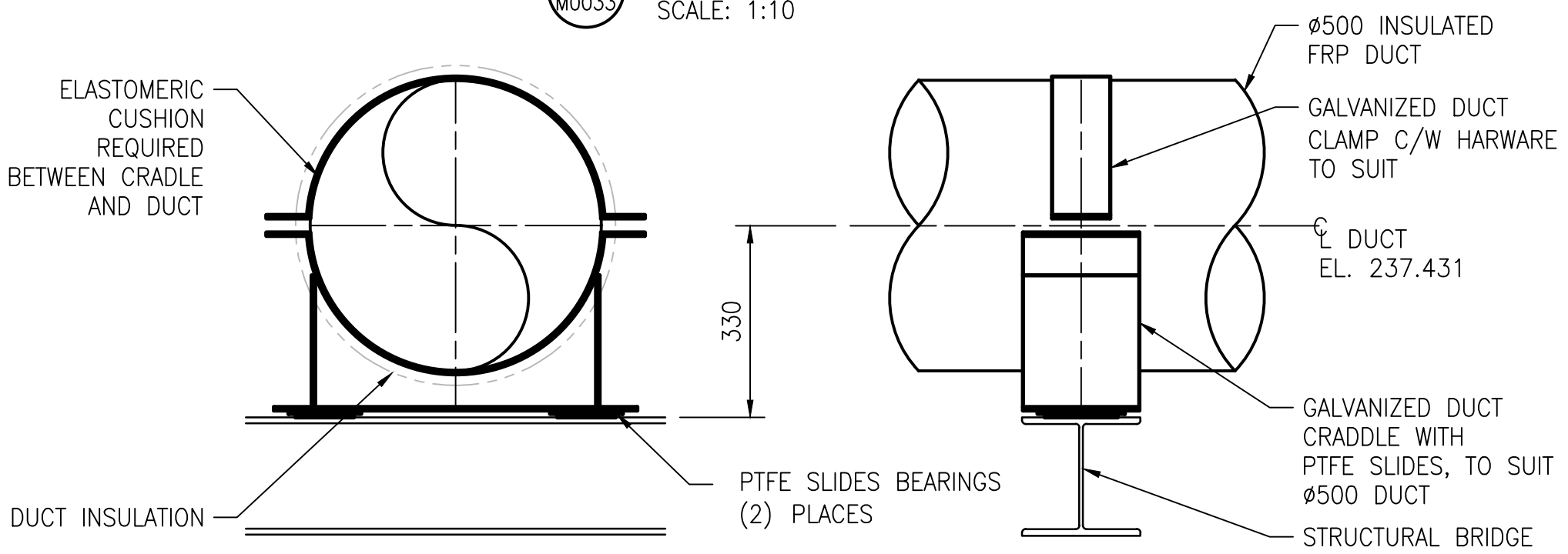
A1 SIZE - 594mm x 841mm



TRUNNION LAYOUT - NEW WORK
SCALE: 1:100



4 TYPE S3 - DUCT SUPPORT
SCALE: 1:10

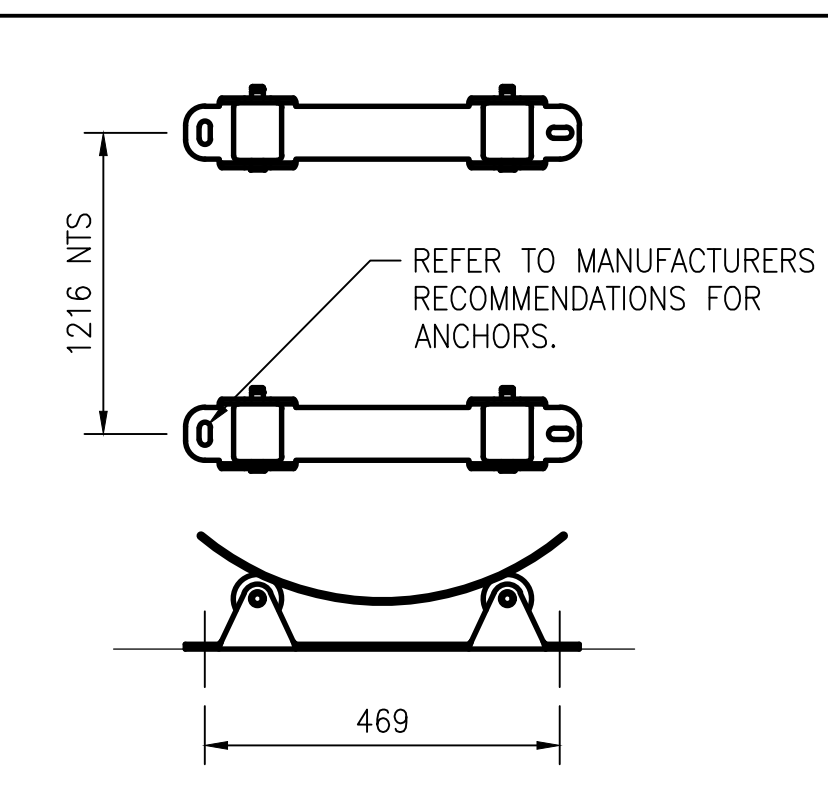


5 TYPE S2 - DUCT SUPPORT
SCALE: 1:10

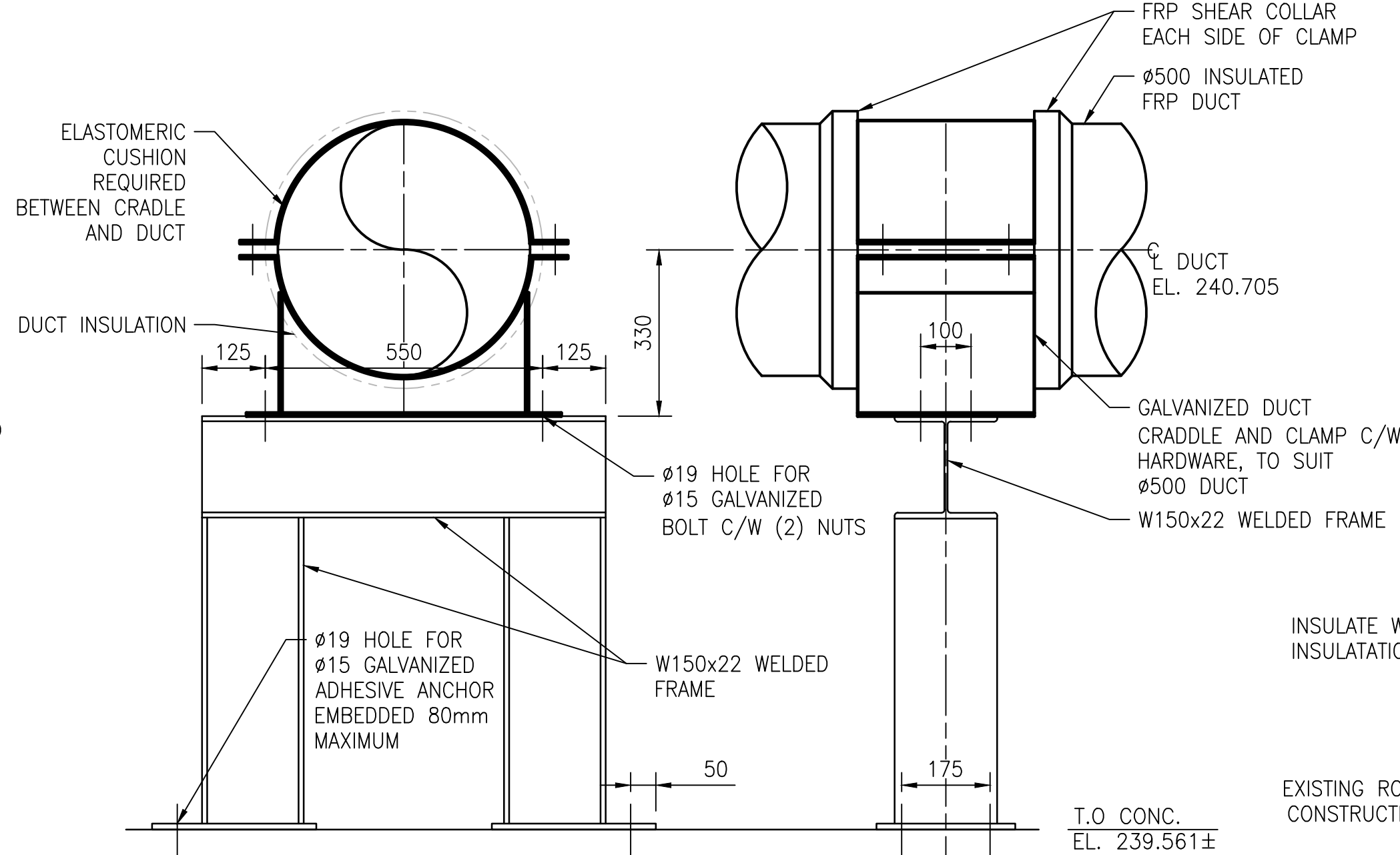
DRAWING NUMBER	REFERENCE DRAWINGS

- GENERAL NOTES**
- DRAWING INFORMATION BASED ON HISTORICAL DRAWING AND SITE INVESTIGATIONS.
 - INSULATION ON ALL EXISTING DOMESTIC WATER, FRESH AIR INTAKE, RAIN WATER LEADER, CONDENSATE AND DRAIN PIPE FITTINGS MAY CONTAIN ASBESTOS MATERIALS. REFER TO EXISTING ASBESTOS REPORTS TO CONFIRM.
 - MASONRY BLOCK WALLS, CEILING OR WALL HARD PLASTERS AND CERAMIC FLOOR TILES MAY CONTAIN ASBESTOS.

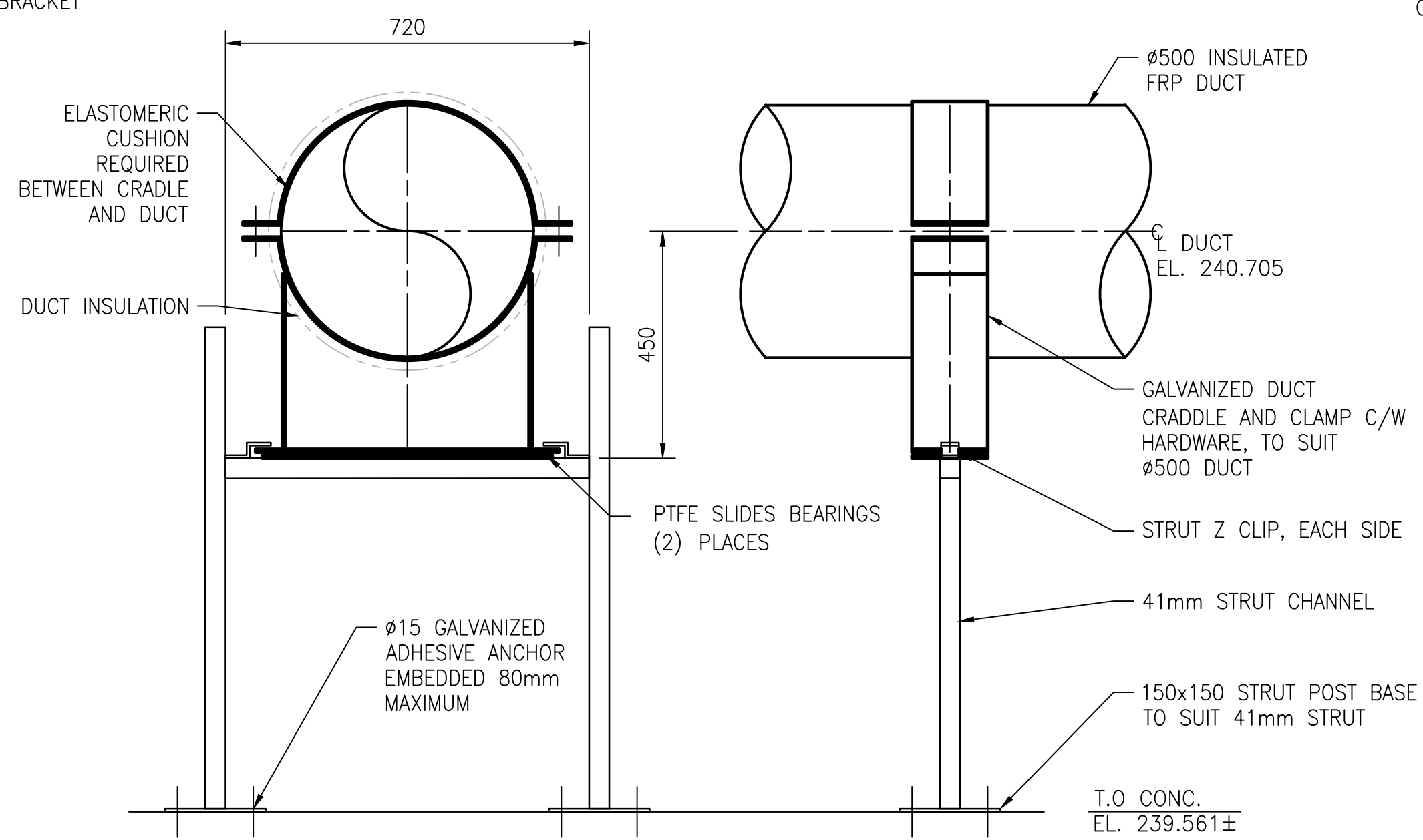
ENGINEERS
GEOSCIENTISTS
MANITOBA
Certificate of Authorization
AtkinsRéalis Canada Inc.
No. 4489



2 TRUNNION - DETAIL
SCALE: 1:10

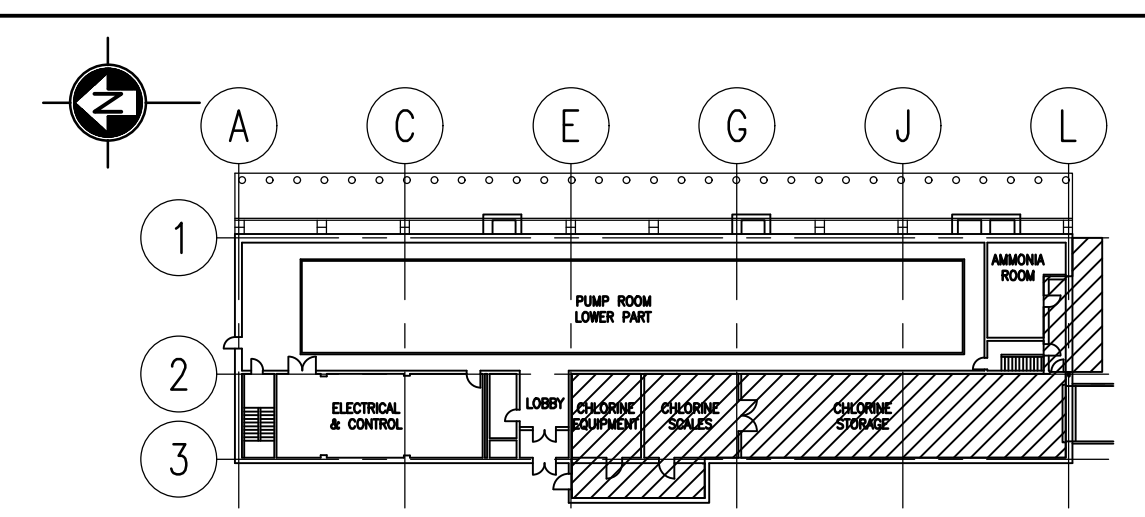
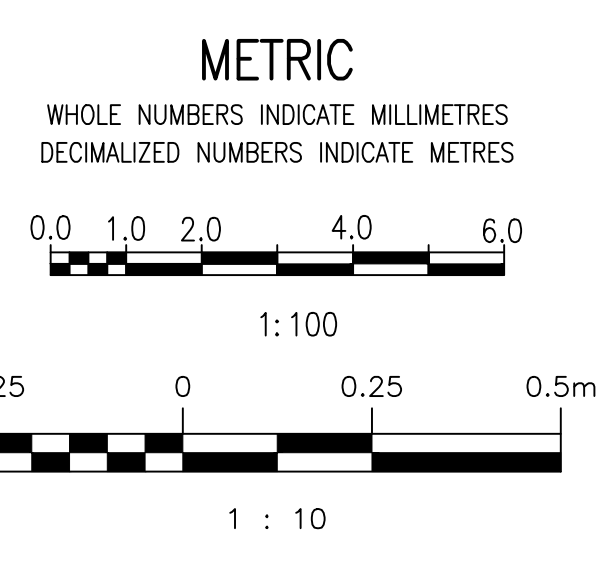


6 TYPE A1 - DUCT SUPPORT
SCALE: 1:10

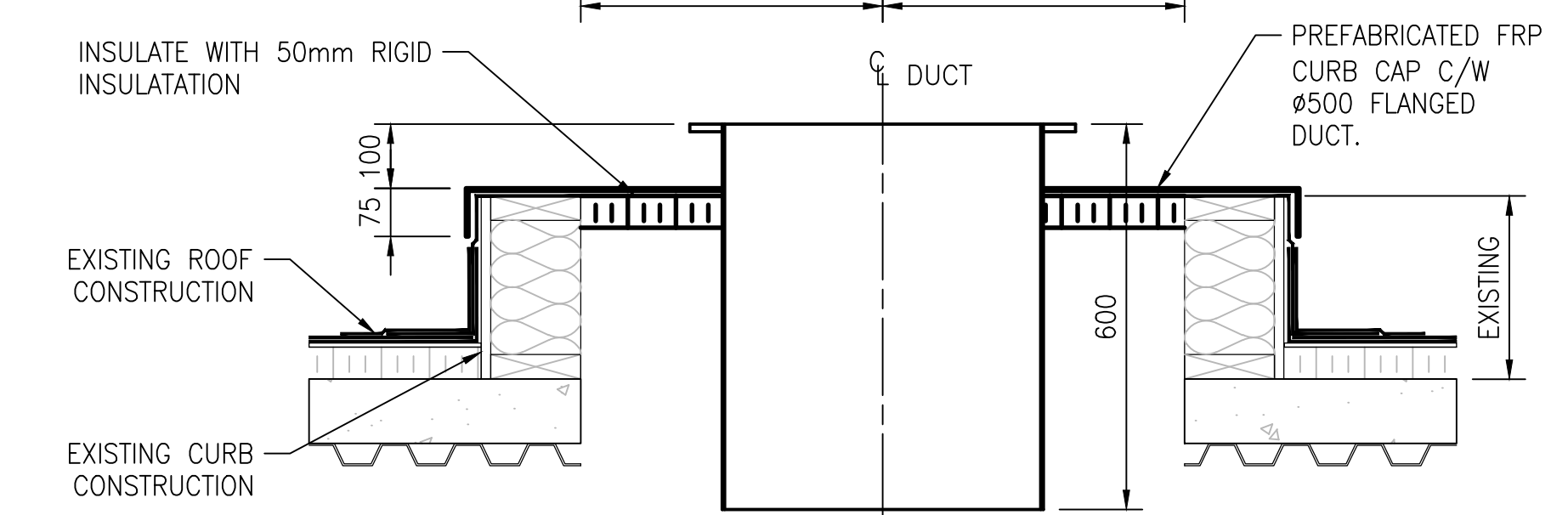
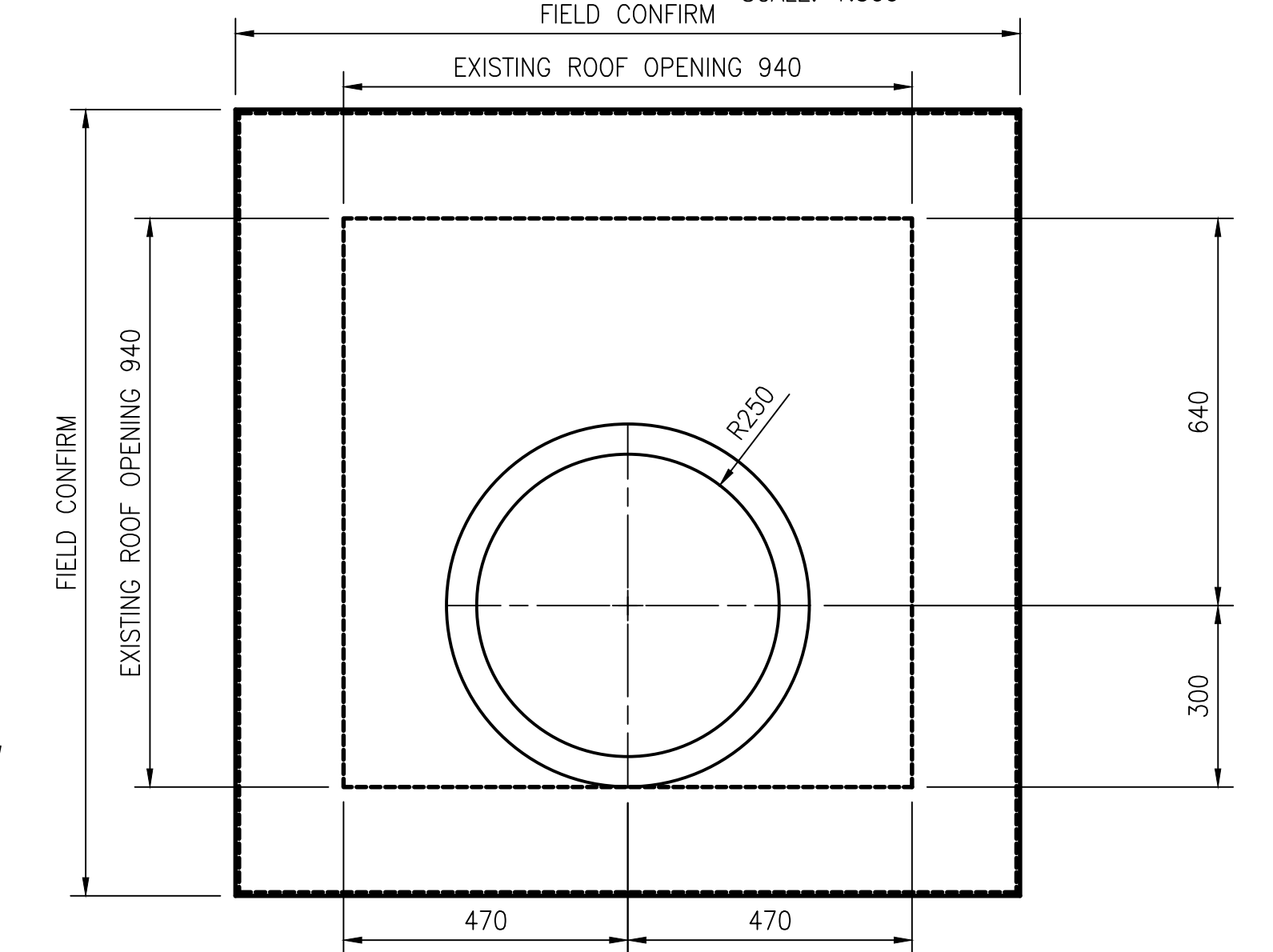


7 TYPE S1 - DUCT SUPPORT
SCALE: 1:10

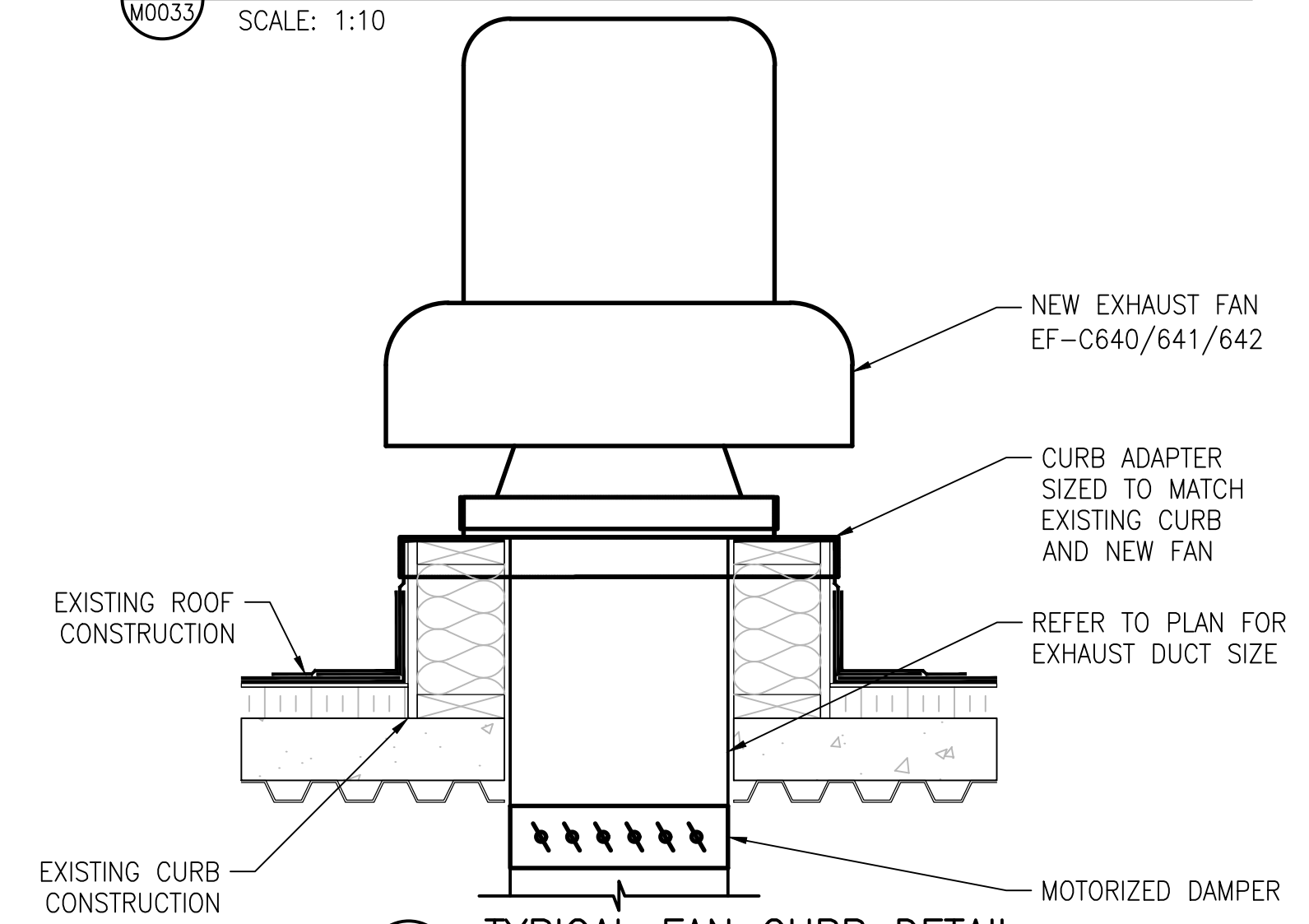
NO.	REVISIONS	DATE	DESIGN	CHECK
00	ISSUED FOR TENDER AND CONSTRUCTION	2025/04/30	TS	SN



KEY PLAN
SCALE: 1:500



1 SCRUBBER DUCT ROOF PENETRATION CAP DETAIL
SCALE: 1:10



3 TYPICAL FAN CURB DETAIL
SCALE: 1:10

AtkinsRéalis
148 Nature Park Way, Winnipeg, Manitoba
Canada R3P 0X7 204-786-8080

DESIGNED BY: T. SHAW	CHECKED BY: S. NORSEWORTHY
DRAWN BY: M. CAUDINO	APPROVED BY: S. NORSEWORTHY
SCALE: AS NOTED	ISSUED FOR CONSTRUCTION BY: M. SKINNER
DATE: 2023-03-06	DATE: 2025/04/30
CONSULTANT NO.: 694715-2000-450D-1005	

ENGINEER'S SEAL

THE CITY OF WINNIPEG
WATER AND WASTE DEPARTMENT

MACLEAN PUMPING STATION
CHLORINE SYSTEM UPGRADE
MECHANICAL
NEW WORK
TONNER PLAN AND DETAILS

CITY DRAWING NUMBER 1-0630M-M0033	SHEET 001	REV. 00	SIZE A1
---------------------------------------------	---------------------	-------------------	-------------------